

PEARPOINT®

# flexitrac™ P550c

Comprehensive. Convenient. Connected.

Portable video inspection for drainage, water and plumbing networks



SPX®

## Portable, modular pipeline inspection – designed with you in mind

### Inspect pipes faster to complete more surveys each day

- The intuitive interface is quick to set up and simple to operate.
- Dedicated function keys make it easy to use.
- Built-in rechargeable batteries lasting all day.

### Stay connected

Reports are ready to share as soon as your survey is complete.

- WiFi connection for sending reports via DropBox or email.
- Advanced connectivity with USB, HDMI and ethernet, making it easy to view and export your data.
- Video streaming to nearby devices.

### A suite of reporting formats

Expand your client base by offering a variety of tailored surveys through;

- MSCC3, 4 & 5 compliant reports.
- WinCan compatible files.
- Basic reports.

### Customised solutions

- Modular by design, the flexitrac P550c system can be paired with a range of products and accessories.
- Our solution gives you flexibility when you need it, enabling you to survey pipes from 1¼" / 32mm to 60" / 1500mm.



## Crawlers

The two crawlers enable you to center your camera across a wide range of pipe sizes.

Auxiliary lighthead for additional light in large or dark pipes



### P356 crawler

Center in pipes from 6" / 150mm to 60" / 1500mm

### P354 crawler

Center in pipes from 4" / 100mm to 12" / 305mm

# flexitrax P550c controller

Alerts for WiFi and battery status



High resolution  
12.1"/307mm screen

Convenient  
cable-tidy  
hooks

Connectivity: USB, HDMI,  
WiFi, ethernet, audio  
and analog video out



IP55 ingress  
protection open  
and closed

Regional keyboard  
layouts available

Dedicated buttons for  
shortcuts to commonly  
used functions



Fingertip control of  
drum/crawler/camera/light  
with joysticks and  
control buttons

## Drums



Powered drum can be fitted  
with up to 1000'/305m of cable



Manual drum

If you need a more  
portable solution, the  
manual drum can help  
you reach access  
points beyond the  
range of your vehicle

PSU (power supply) for manual drum



Easier



Faster



Simpler

### Easier. Faster. Simpler.

The flexitrac P550c is designed around simplicity of operation. Ready to use in 30 seconds from powering on, it requires minimal training to operate, letting you concentrate on pipe inspection.

A large 12.1"/307mm HD, daylight visible screen combined with full-size keyboard and dedicated function keys guide you through the survey process, making the system faster and easier to use.

Built in is a high capacity internal lithium-ion battery, providing power for up to a full day's typical usage, and 128Gb of solid state memory, sufficient for over 90 hours of video recording.

### Tailored solutions

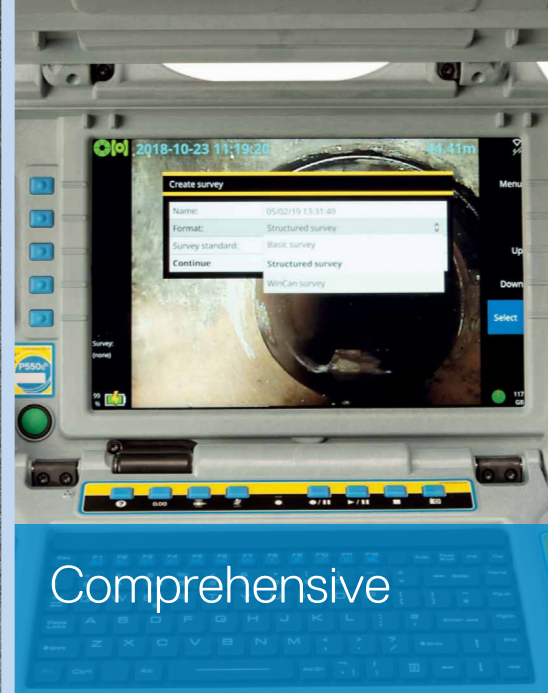
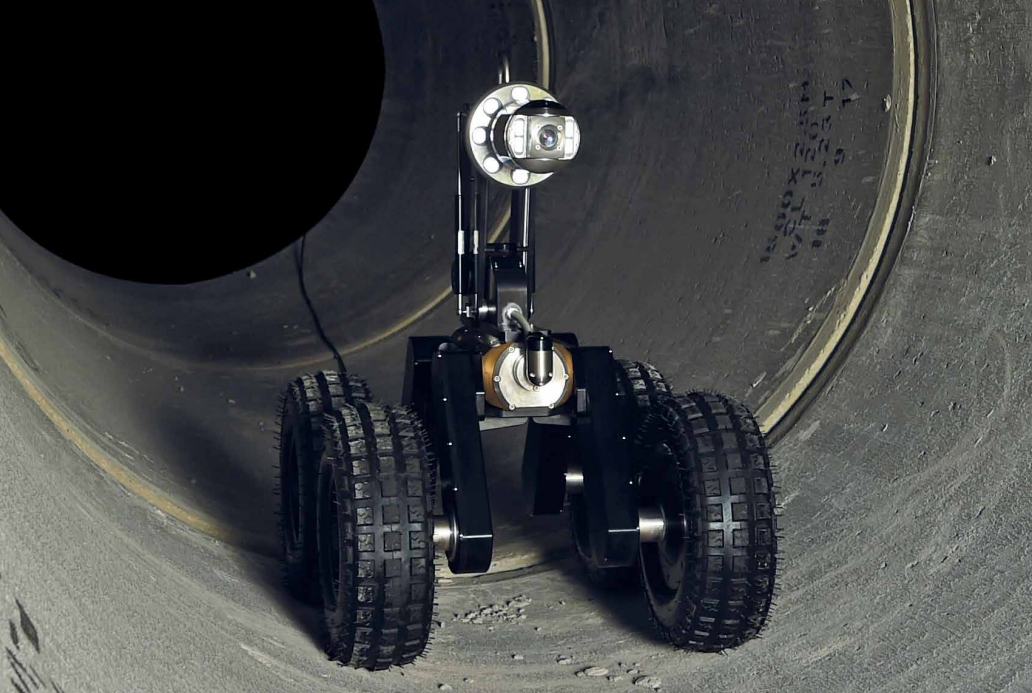
This portable and modular crawler system enables operators to customise the flexitrac P550c solution for the inspection of a vast range of pipes, in all locations.

The flexitrac P550c can be readily transported and easily wheeled onto site through our rugged, ergonomic design, allowing you to reach access points beyond the range of your vehicle.



### Survey an extensive range of pipes

Survey pipes as small as 1 ¼"/32mm or as large as 60"/1500mm.



## Reporting

The flexitrac P550c has complete on-board reporting capabilities and connectivity, quickly delivering content-rich survey reports to you and your customers. Creating a comprehensive report is quick and easy;

### 1 Choose the reporting template

Use customisable report templates for each occasion; including the Water Research Council's MSCC3, 4 and 5 condition codes and WinCan compatible file formats.

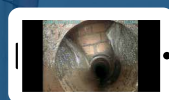
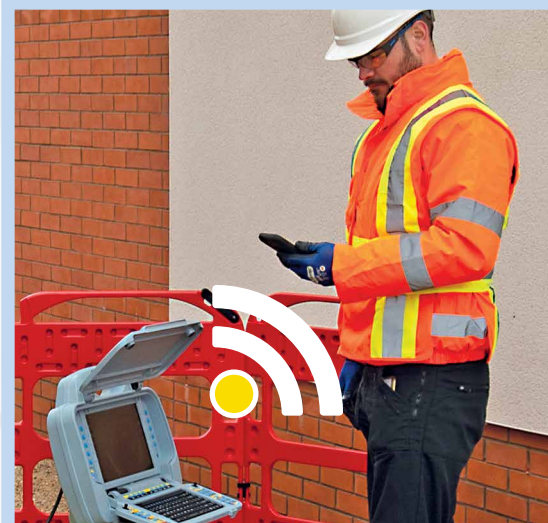
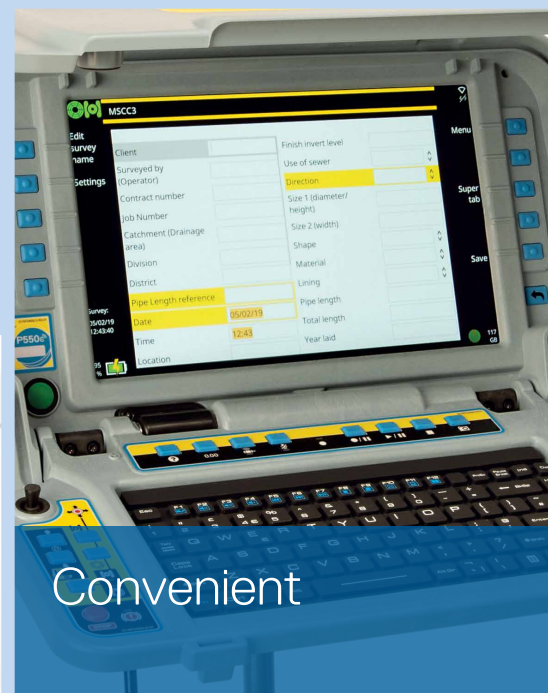
### 2 Complete the survey

Enter your survey details using a tactile, full-size keyboard. Dedicated and context-sensitive function buttons guide you through the survey process.

### 3 Distribute the report

Share reports, images and video as soon as your survey is complete via DropBox or email\*. Alternatively you can export a report to a USB stick or stream videos to a nearby device.

(\*WiFi access point required, such as mobile phone, tablet or dongle)



Connected

# Accessories and Options

When building your flexitrac P550c solution, centering your camera in the middle of the pipe is key. Once the drum and crawler system have been chosen, enhance your pipeline inspection capabilities by incorporating our expert range of accessories to meet the demands of the various pipes you are working in.

## Wheels

Select from a range of small, medium or large wheels and/or spacers to suit your pipe size and terrain.



## Elevators

Both manual and powered elevators are available, for centered inspection up to 36"/900mm.



Other accessories are available.

## Pushrods

A choice of pushrod reels of varying length and flexibility can be connected to the flexitrac P550c system. Use a pushrod to survey pipes as small as 1¼"/32mm.



## Cameras

Choose from three camera models; Forward view only, Pan and Tilt or Pan and Tilt, with 10 x optical zoom.



## Cradle

Combine the cradle and elevator together with the large crawler for centered inspection up to 60"/1500mm.



## Locator

A sonde is integrated into each crawler, enabling you to use a suitable locator to pinpoint the crawler's location.

With three sonde frequencies, the RD5100™S can be used to trace the crawler whilst in use.

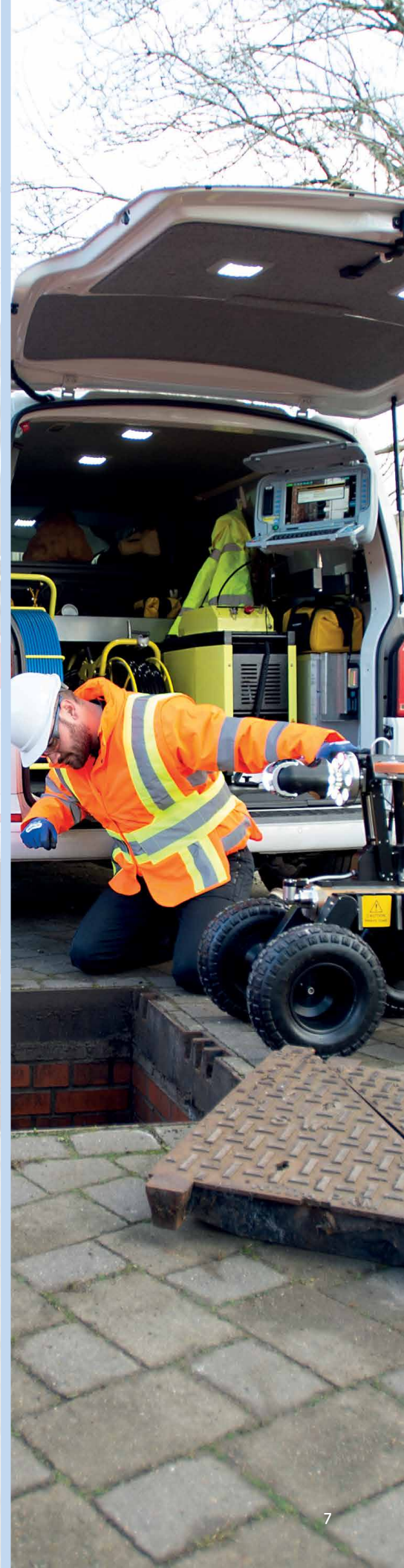


The flexitrac P550c crawler system is fully compatible with Pearpoint's flexiprobe™ P540, P340 and P350 range.

# Specifications

flexitrax P550c	
<b>Battery capacity</b>	Internal Li-Ion Battery (4S2P) - 14.68V, 6.4Ah (93.95Wh)
<b>Battery run-time</b>	Up to one day's typical usage, 7.5hrs view only/5hrs continuous recording*
<b>Cameras</b>	Forward View with 120 Lumen LEDs Pan/Tilt with 210 Lumen LEDs Pan, Tilt and 10 x optical Zoom with 420 Lumen LEDs
<b>Connectivity</b>	USB 2.0 (x3), HDMI video out, analog video out (PAL/NTSC), headphones out, microphone in, rod/camera/drum connectivity and 802.11 b/g/n WiFi
<b>Construction</b>	High impact ABS and powder-coated, zinc-plated mild steel
<b>Controllers</b>	flexitrax P550c command module with integrated joysticks to control the camera and crawler Optional pendant controller for deployment phase
<b>Dimensions</b>	17.5" x 15.2" x 6.1"/445mm x 385mm x 155mm
<b>Display</b>	12.1"/307mm, 1280 x 800 color LCD
<b>Drums</b>	Manual drum or powered drum, with cable length options from 500' to 1000'/150m to 305m
<b>Environmental Protection</b>	flexitrax P550c controller: IP55 Power supply/charger: IP54 rated for indoor use
<b>Input power requirements</b>	10-30V, 60W
<b>Power sources</b>	Power from drum, external mains PSU or internal battery
<b>Power supply</b>	Mains input 100-240VAC, 50-60Hz, 1.7A DC output 16V, 3.75A, 60W
<b>Recording formats</b>	Video: H.264. Audio: MP3. File format: MP4
<b>Report File Formats</b>	Basic reports, MSCC3 & 4: docx MSCC5: docx or Xml WinCan: Xml Video: MP4 Image: JPEG
<b>Storage</b>	Integral 128Gb and support of USB flash storage
<b>Temperature</b>	Storage: 4°F to 176°F/-20°C to +80°C Operating: 14°F to 122°F/-10°C to +50°C Charging: 32°F to 104°F/0°C to +40°C
<b>Weight</b>	16lb/7.25 kg
<b>Wheels</b>	Small, medium and large solid rubber and large pneumatic for conventional/silted pipes Rasp wheels for smooth/relined pipes

\*May vary depending on power management settings chosen, ambient conditions, accessories attached, recording time and other factors



**READY TO GET STARTED**

Visit [www.pearpoint.com](http://www.pearpoint.com)

Visit [www.pearpoint.com](http://www.pearpoint.com)

## Global locations

### Radiodetection (USA)

28 Tower Road, Raymond, Maine 04071, USA

Toll Free: +1 (877) 247 3797 Tel: +1 (207) 655 8525 [rd.sales.us@spx.com](mailto:rd.sales.us@spx.com)

### Pearpoint (USA)

39-740 Garand Lane, Unit B, Palm Desert, CA 92211, USA

Toll Free: +1 800 688 8094 Tel: +1 760 343 7350 [pearpoint.sales.us@spx.com](mailto:pearpoint.sales.us@spx.com)

### Schonstedt Instrument Company (USA)

100 Edmond Road, Kearneysville, WV 25430 USA

Toll Free: +1 888 367 7014 Tel: +1 304 724 4722 [schonstedt.info@spx.com](mailto:schonstedt.info@spx.com)

### Radiodetection (Canada)

344 Edgeley Boulevard, Unit 34, Concord, Ontario L4K 4B7, Canada

Toll Free: +1 (800) 665 7953 Tel: +1 (905) 660 9995 [rd.sales.ca@spx.com](mailto:rd.sales.ca@spx.com)

### Radiodetection Ltd. (UK)

Western Drive, Bristol, BS14 0AF, UK

Tel: +44 (0) 117 976 7776 [rd.sales.uk@spx.com](mailto:rd.sales.uk@spx.com)

### Radiodetection (France)

13 Grande Rue, 76220, Neuf Marché, France

Tel: +33 (0) 2 32 89 93 60 [rd.sales.fr@spx.com](mailto:rd.sales.fr@spx.com)

### Radiodetection (Benelux)

Industriestraat 11, 7041 GD 's-Heerenberg, Netherlands

Tel: +31 (0) 314 66 47 00 [rd.sales.nl@spx.com](mailto:rd.sales.nl@spx.com)

### Radiodetection (Germany)

Groendahlscher Weg 118, 46446 Emmerich am Rhein, Germany

Tel: +49 (0) 28 51 92 37 20 [rd.sales.de@spx.com](mailto:rd.sales.de@spx.com)

### Radiodetection (Asia-Pacific)

Room 708, CC Wu Building, 302-308 Hennessy Road, Wan Chai, Hong Kong SAR, China

Tel: +852 2110 8160 [rd.sales.asiapacific@spx.com](mailto:rd.sales.asiapacific@spx.com)

### Radiodetection (China)

Ming Hao Building D304, No. 13 Fuqian Avenue, Tianzhu Town, Shunyi District, Beijing 101312, China

Tel: +86 (0) 10 8416-3372 [rd.service.cn@spx.com](mailto:rd.service.cn@spx.com)

### Radiodetection (Australia)

Unit H1, 101 Rookwood Road, Yagoona NSW 2199, Australia

Tel: +61 (0) 2 9707 3222 [rd.sales.au@spx.com](mailto:rd.sales.au@spx.com)