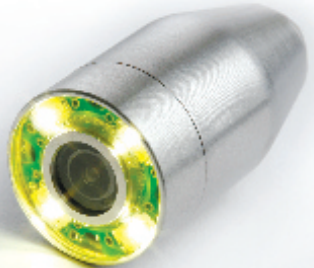


# Advanced Underwater Inspection Technologies

Inuktun technology lets you... see it for yourself.



**see it** for yourself.

**A**t only 7/8" (22mm) diameter, the Mini Crystal Cam allows inspection in extremely small pipes and confined spaces. The high quality color camera offers excellent image quality and has built in LED lighting. Combining an external Stainless Steel housing and internal potted electronics makes the camera extremely durable, ideal for operation in the most extreme conditions. With a depth rating of 3,300 feet (1,000 meters), the Mini Crystal Cam can go almost everywhere you need it.

## APPLICATIONS

- Internal inspection of pipes
- Tank and well inspections
- Confined space inspections
- Drop Camera
- Underwater surveillance
- Wet weather surveillance
- Operator visuals for monitoring equipment and machinery
- ROV's
- Pre-dive inspections

## BENEFITS

- Light weight
- Durable
- Impact resistant
- Depth rated to 3,300'/1,000m
- Portable inspection system with optional battery pack for remote operation
- Inexpensive and versatile
- Pre-settable focus
- Can be secured to virtually any surface, including underwater vehicles
- Interchangeable tether length from 100'/30m to 3,300'/1,000m to suit a variety of inspection applications
- Easily fit through small openings

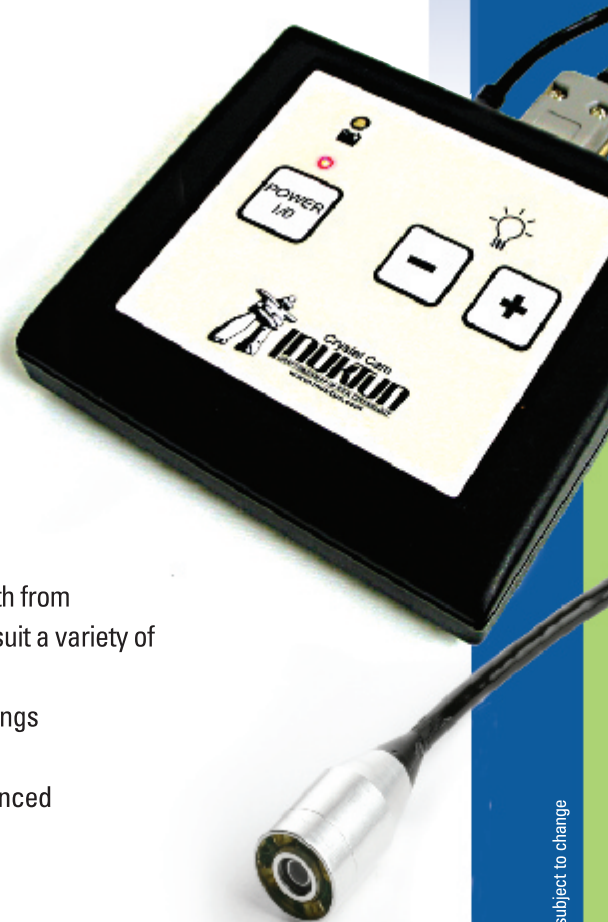
For more information on advanced pipe inspection systems, contact Inuktun today.

CALL 1 877 468 5886

E-MAIL [sales@inuktun.com](mailto:sales@inuktun.com)

ONLINE [www.inuktun.com](http://www.inuktun.com)

MINI CRYSTAL CAM



Printed in Canada

\* Specifications subject to change

## Size

**Length** 2.5" / 63.5mm

**Diameter** 0.875" / 22mm

**Minimum Pipe Diameter** 1" / 25mm

**Active Controls** Power, lights

**Lights** Variable intensity

## Camera

**Material** Epoxy + Stainless Steel

**Image Sensor** Color 1/4" CMOS

**Sensitivity** <1.0 lux

**Resolution** 420 TV lines

**Iris** Auto electronic

**Lens** 3.4mm

**Focus** Pre-settable focus

**HFOV** 55° in air, 41° in water

**Lights** 4 high intensity LED's

**Camera Weight** 0.2 lbs / 0.09kg

**Connector** 6 pin (male) Subconn Micro Circular

**Option** NTSC/PAL

## Controls

**Active Controls** Power, lights

**Lights** LED, up to 50,000 hours, variable intensity

Video text overlay with keyboard entry

## Operating Environment

**Temperature** 0°-50°C (32°-122°F)

**Depth Rating** 3,300' / 1000m

## Control System

**Power** 12 VDC (AC adapter included)

**Controller Weight** 0.5lb / 0.22kg

**Dimensions** 5.5" x 5" x 1.5"

(14cm x 12.7cm x 3.8cm)

**Interface** Membrane controller

**Tether Cable** 100' / 30m Standard

Custom lengths to 3,300' / 1,000m available

**Options** Pelican Case, Turnkey Controller w/ monitor and battery pack, locking sleeves, digital recorder

Specifications subject to change

